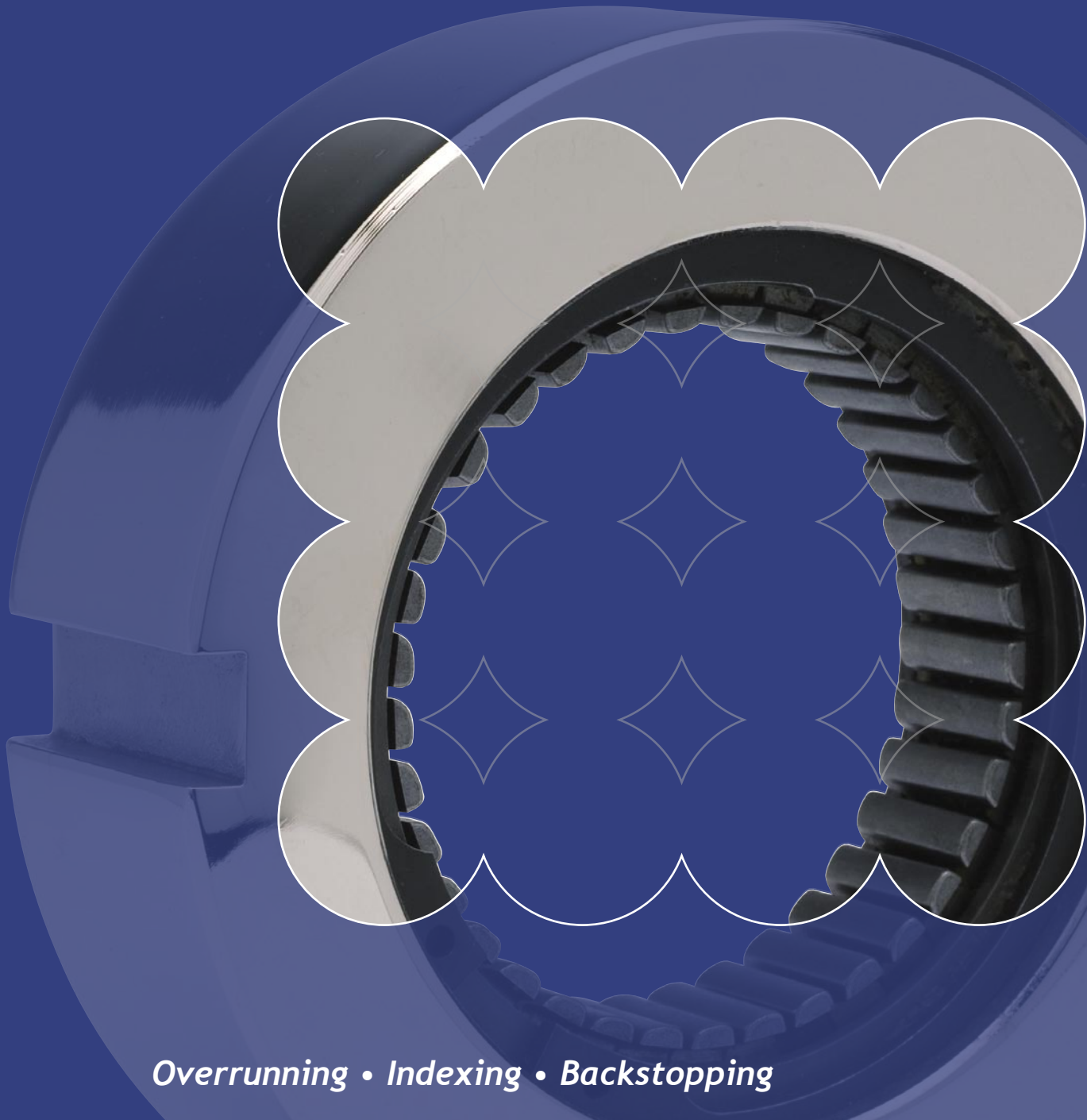


Freewheels

Sprag and Trapped Roller Clutches



Overrunning • Indexing • Backstopping

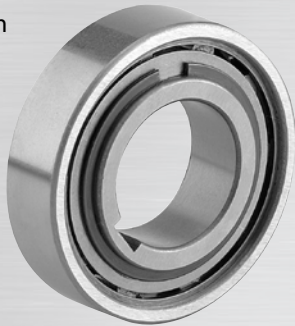
RENOLD
Superior Freewheel Technology

www.renold.com

Trapped Roller Freewheels

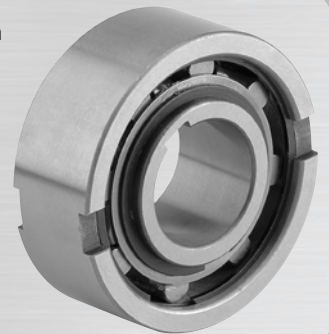
REUS

A roller type freewheel which is non bearing supported. Available from size 8 to 60.



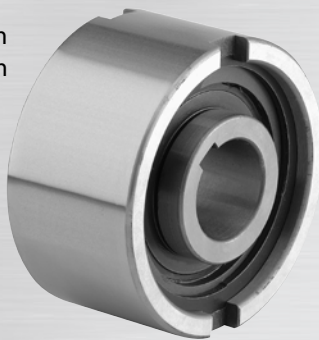
REUSNU

A roller type freewheel which is non bearing supported. These freewheels have the same dimensions as the 63 series ball bearing. Available from size 8 to 60.



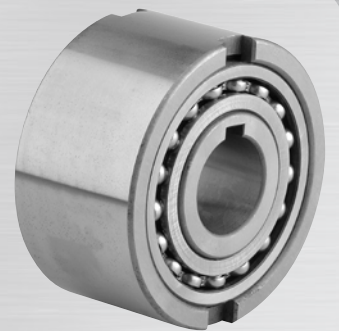
REUF

A roller type freewheel which is non bearing supported with external keyways. Similar to the REUSNU but wider.



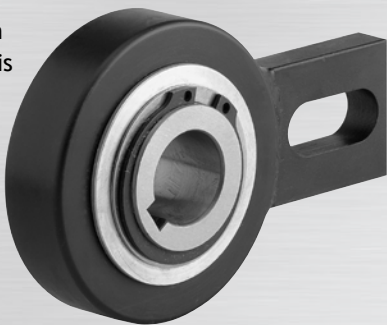
REGF

REGF freewheels are self centring. Sizes 8 to 20 centring is steel on steel. Sizes 25 to 130 are centred by 2.160 series bearings. Available from size 8 to 130.



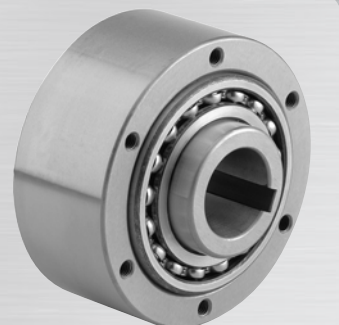
REGV

Concentricity between inner and outer races is carried out by means of bushes. Products are supplied with torque arm. Available from size 20 to 120.



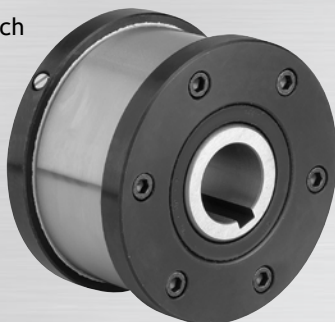
REGL

These freewheels have 160 series ball bearings that are used to centre the inner race with the outer race. Available from size 12 to size 150.



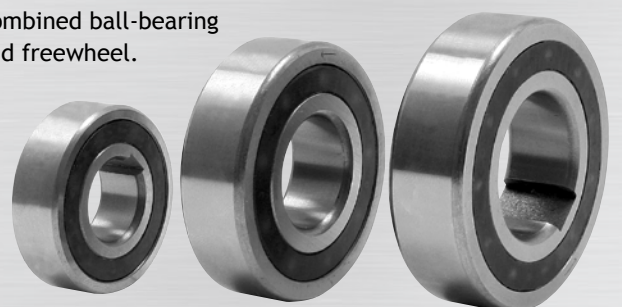
REGLP

Roller type freewheels which form part of a modular system (using the REGL). Available from size 12 to 150.



REUK/REUKC and REUKCC

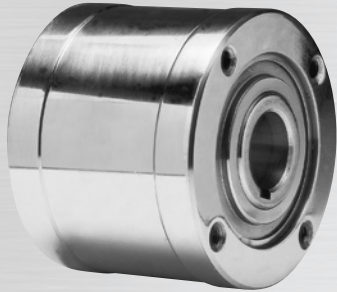
Combined ball-bearing and freewheel.



Sprag Clutch Freewheels

SO/SX/SO-L

Freewheels available in three variations: **SO**, for overrunning applications. **SX**, for indexing applications. **SO-L**, grease filled with labyrinth seal. Available from size 300 to 1027.



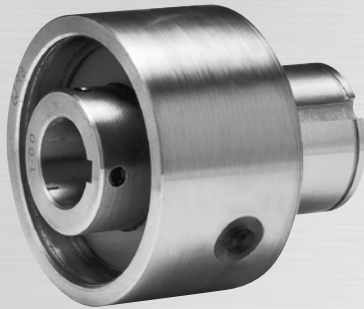
SO/SX/SO-L

STUB SHAFT ADAPTOR. The same as the SO/SX/SO-L freewheels. These freewheel clutches are made available with fitted stub shaft adaptors. Available from size 300 to 1027.



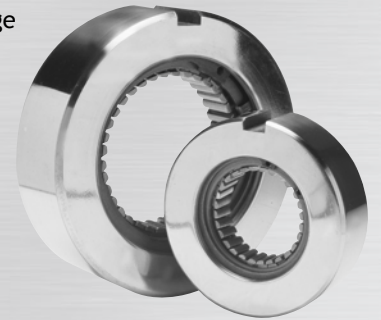
SB

A light duty freewheel clutch. Allows direct mounting with chain pinions, gears etc. Available from size 3 to 16.



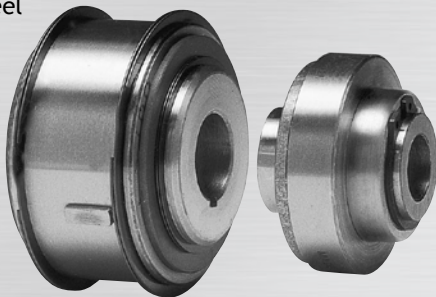
DM

Available in a wide range of sizes. These include sizes 125 to size 513.



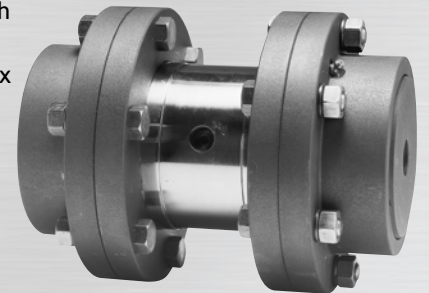
SA

Light duty freewheel clutches. Available from size 02 to size 05.



SCGF

Denotes sprag clutch freewheels fitted with Renold Gearflex couplings. Available in all freewheel sizes.



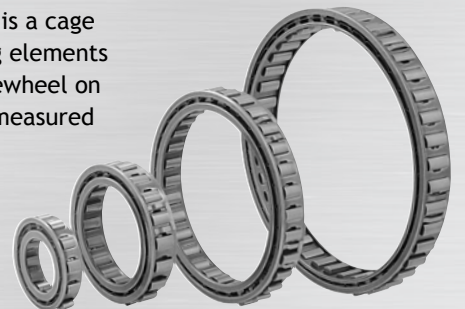
SCPF

Denotes sprag clutch freewheels fitted with Renold Pinflex couplings. Available in all freewheel sizes.



REGP cage assembly

The REGP series is a cage comprising sprag elements running as a freewheel on races primarily measured in inches.



Freewheels Interchange Tables

TRAPPED ROLLER FREEWHEELS

Renold	Formsprag Stieber	Marland	Morse Emerson Tsubaki	Ringspann	GMN
REGL	GFP/AL*	N/A	MZEU	FGR	GL
REGLP	GFRN/ALP*	N/A	MZEU K	FGRN	GLP
REGV	AV/RSBW*	N/A		FAV/FAB*	GW/RSBW
REGF	NFR/ANG	N/A		FNR	GF
REUF	NF/AE	N/A		FN	UF
REUSNU	NFS/ASNU	N/A	NFS	FSN	USNU
REUS	NSS/AS	AS	NSS	FCN/R	NSS/AS/US
REUK	CSK/KK	CSK	KK	ZZ	K
REUKC	CSKP	N/A	KK 1K	ZZP/FCN-K	KP
REUKCC	CSKPP	N/A	KK 2K	ZZPP	KPP
REUK 2RS	CSK 2RS	N/A	KK 2DG	ZZ 2RS	N/A
REGP	DC	N/A		BWX	DC

* AL, ALP, FAB, RSBW. For these variants please refer to Renold.

REGL units can be fitted with either new flanges/covers or existing flanges/covers from any interchangeable competitors unit listed above.

SPRAG CLUTCH FREEWHEELS

Renold	Formsprag Stieber	Marland	Morse Emerson Tsubaki	Ringspann	Dodge
DM 200	FS 20	R 200	B-200A	RC 200	N/A
DM 500	FS 50	N/A	B-500A	N/A	N/A
DMD	N/A	N/A	N/A	RCD	TXT

RENOLD LARGE HOLDBACKS

Renold	Formsprag Stieber	Marland	Morse Emerson	Tsubaki	Ringspann	Falk	Stephens Adamson
SH	LLH	MA	CB	BS	FRH	NRT	HD

RENOLD SA SERIES

Renold	Formsprag Stieber		Marland			Morse Emerson Tsubaki			Ringspann				
	Max bore In mm	Max torque lb ft Nm	Max bore (In)	Max torque lb ft		Max bore (In)	Max torque lb ft		Max bore (In)	Max torque lb ft			
SA 02	0.250 6	4.5 6	FS 02	0.250	4.5	N/A	N/A	N/A	N/A	N/A	N/A	N/A	N/A
SA04	0.375 10	17 23	FS 04	0.375	17	N/A	N/A	N/A	N/A	N/A	N/A	N/A	N/A
SA05	0.625 16	30 41	FS 05	0.625	30	N/A	N/A	N/A	N/A	N/A	N/A	N/A	N/A
<i>SA: Overrunning/ backstopping/indexing. Grease lubrication</i>		<i>FS: Overrunning/ backstopping/indexing. Grease lubrication.</i>		N/A			N/A			N/A			

- Direct interchange - no fuss!
- Quality and excellence - a given
- Performance & reliability - count on Renold
- Sprag freewheels - zero backlash
- Customisation - all freewheels can be designed and built for your application
- Safety and peace of mind - Renold assurance
- Full technical catalogue - available on request or download pdf from www.renold.com

Freewheels Interchange Tables

RENOLD SB SERIES

Renold	Max bore torque		Formsprag Stieber	Max bore torque		Marland	Max bore torque		Morse Emerson Tsubaki	Max bore torque		Ringspann	Max bore torque	
	(In)	(lb ft)		(In)	(lb ft)		(In)	(lb ft)		(In)	(lb ft)		(In)	(lb ft)
SB 3	0.500	40	FSR 3	0.500	40	FSR 3	0.500	40	PB 3	0.500	40	N/A	N/A	N/A
	10	54												
SB 5	0.625	85	FSR 5	0.625	85	FSR 5	0.625	85	PB 5	0.625	85	N/A	N/A	N/A
	16	115												
SB 6	0.750	275	FSR 6	0.750	275	FSR 6	0.750	275	PB 6	0.750	275	N/A	N/A	N/A
	18	372												
SB 8	1.000	400	FSR 8	1.000	400	FSR 8	1.000	400	PB 8	1.000	400	N/A	N/A	N/A
	25	542												
SB10	1.250	650	FSR 10	1.250	650	FSR 10	1.250	650	PB 10	1.250	650	N/A	N/A	N/A
	32	881												
SB12	1.500	1300	FSR 12	1.500	1300	FSR 12	1.500	1300	PB 12	1.500	1300	N/A	N/A	N/A
	38	1760												
SB 14	1.750	1450	FSR 14	1.750	1450	FSR 14	1.750	1450	PB 14	1.750	1450	N/A	N/A	N/A
	45	1970												
SB 16	2.000	1600	FSR 16	2.000	1600	FSR 16	2.000	1600	PB 16	2.000	1600	N/A	N/A	N/A
	50	2170												
SB: Overrunning/backstopping/indexing. Oil or grease lubrication.			FSR: Overrunning/backstopping/indexing. Oil or grease lubrication.			FSR: Overrunning/backstopping/indexing. Oil or grease lubrication.			PB: Overrunning/backstopping/indexing. Oil or grease lubrication.			N/A		

RENOLD SO/SX SERIES

Renold	Max bore torque		Formsprag Stieber	Max bore torque		Marland	Max bore torque		Morse Emerson Tsubaki	Max bore torque		Ringspann	Max bore torque	
	(In)	(lb ft)		(In)	(lb ft)		(In)	(lb ft)		(In)	(lb ft)		(In)	(lb ft)
SO 300 SX 300	0.750	275	FSO 300 HPI 300	0.750	275	RMS 12 RMS FG 12	0.750	275	MG&MO 300 MI 300	0.750	275	FRS 300 FRSG 300	0.750	295
SO 400 SX 400	0.875	300	FSO 400 HPI 400	0.875	300	RMS 14 RMS FG14	0.875	300	MG&MO 400 MI 400	0.875	300	FRS 400 FRSG 400	0.875	340
SO 500 SX 500	1.312	1168	FSO 500 HPI 500	1.312	1175	RMS 21 RMS FG 21	1.312	1175	MG&MO 500 MI 500	1.312	1175	FRS 500 FRSG 500	1.312	1312
SO 600 SX 600	2.000	2285	FSO 600 HPI 600	2.000	2250	RMS 32 RMS FG 32	2.000	2250	MG&MO 600 MI 600	2.000	2250	FRS 600 FRSG 600	2.000	2325
SO 700 SX 700	2.938	5086	FSO 700 HPI 700	2.938	5000	RMS 47 RMS FG 47	2.938	5000	MG&MO 700 MI 700	2.938	5000	FRS 700 FRSG 700	2.938	6800
SO 750 SX 750	3.437	7120	FSO 750 HPI 750	3.437	7000	RMS 55 RMS FG 55	3.437	7000	MG&MO 750 MI 750	3.437	7000	FRS 750 FRSG 750	3.437	10400
SO 800 SX 800	4.437	13223	FSO 800 HPI 800	4.437	13000	RMS 72 RMS FG 72	4.437	13000	MG&MO 800 MI 800	4.437	13000	FRS 800 FRSG 800	4.500	14500
SO 900 SX 900	5.437	18000	FSO 900 HPI 900	5.437	18000	RMS 87 RMS FG 87	5.437	18000	MG&MO 900 MI 900	5.437	18000	FRS 900 FRSG 900	5.437	20000
SO 1000 SX 1000	6.437	24987	N/A			N/A			MG&MO 1000 MI 1000	6.437	24987	FRS 1000 FRSG 1000	7.000	29400
SO 1027 SX 1027	7.000	27000	FSO 1027 HPI 1027	7.000	27000	RMS 112 RMS FG 112	7.000	27000	N/A			N/A		
SO: Overrunning/backstopping. SX: Indexing. Oil or grease lubrication.			FSO: Overrunning/backstopping. HPI: Indexing. Oil or grease lubrication.			RMS: Overrunning/backstopping/indexing. RMSG: Grease lubricated.			MG: Overrunning/backstopping. MO: Labyrinth seal. MI: indexing.			FRS: Overrunning/backstopping/indexing. FRSG: Grease lubricated.		

For all SO series clutches (size 300 to 1027) a standard range of Renold RTA torque arms are available.

AUSTRALIA

Melbourne (Victoria)
Tel + 61 (03) 9262 3333
Fax + 61 (03) 9561 8561
also at: Sydney, Brisbane, Adelaide, Perth,
Newcastle, Wollongong, Townsville

AUSTRIA

Vienna
Tel + 43 (0) 13303484 0
Fax + 43 (0) 13303484 5

BELGIUM

Brussels
Tel + 32 (0) 2 201 1262
Fax + 32 (0) 2 203 2210

CANADA

Brantford (Ontario)
Tel + 1 519 756 6118
Fax + 1 519 756 1767
also at: Montreal

CHINA

Shanghai
Tel + 86 21 5046 2696
Fax + 86 21 5046 2695

CZECH REPUBLIC

Jaroslavice
Tel + 42 67 7211074
Fax + 42 67 7211074

DENMARK

Brøndby (Copenhagen)
Tel + 45 43 452611
Fax + 45 43 456592

FRANCE

Seclin
Tel + 33 (0) 320 16 29 29
Fax + 33 (0) 320 16 29 00
Calais (chain only)
Tel + 33 (0) 321 97 99 45
Fax + 33 (0) 321 97 83 45

GERMANY

Mechernich
Tel + 49 (0) 2256 95 90 74
Fax + 49 (0) 2256 95 91 69
renold.deutschland@renold.com

HUNGARY

Havasi Janos
Tel + 36 (0) 78 312483
Fax + 36 (0) 78 312483

INDIA

Colmbatore
Tel +91 422 2532 357
Tel +91 422 2532 358
marketing@renold.in

MALAYSIA

Petaling Jaya
Tel + 603 5191 9880
Fax + 603 5191 9881
also at: Johor Bharu, Ipoh, Butterworth

NETHERLANDS

Amsterdam
Tel + 31 206 146661
Fax + 31 206 146391

NEW ZEALAND

Auckland
Tel + (0) 64 9 828 5018
Fax + (0) 64 9 828 5019
also at: Christchurch

SINGAPORE

Singapore
Tel + 65 6760 2422
Fax + 65 6760 1507

SOUTH AFRICA

Benoni
Tel + (0) 27 11 747 9500
Fax + (0) 27 11 747 9505
also at: Durban, Cape Town,
Port Elizabeth, Witbank

SPAIN

Renold Hi-Tec Couplings SA
Tel + 34 93 6380558
Fax + 34 93 6380737
renold@renold-hitec.com

SWEDEN

Brøndby (Copenhagen)
Tel + 45 43 245028
Fax + 45 43 456592

SWITZERLAND

Dübendorf (Zürich)
Tel + 41 (0) 1 824 8484
Fax + 41 (0) 1 824 8411
also at: Crissier (Lausanne)

UK

Renold Clutches & Couplings, Wales
Tel + 44 (0) 29 20792737
Fax + 44 (0) 29 20791360
couplings@cc.renold.com

Renold Hi-Tec Couplings, Halifax
Tel + 44 (0) 1422 255000
Fax + 44 (0) 1422 320273
couplings@hitec.renold.com

Renold Gears, Milnrow
Tel + 44 (0) 1706 751000
Fax + 44 (0) 1706 751001
sales@gears.renold.com

USA

Renold Ajax
Westfield, New York
Tel + 1 716 326 3121
Fax + 1 716 326 6121

WEB

www.renold.com

E-MAIL

enquiry@renold.com

For other country distributors please
contact Renold UK or visit the renold
website.

Whilst all reasonable care in compiling
the information contained in this brochure
is taken, no responsibility is accepted for
printing errors. All information contained
in this brochure is subject to change after
the date of publication.

RENOLD
Superior Freewheel Technology

www.renold.com